

KHSAA Basketball - Game Box Score

Christian County Lady Colonels vs. Sacred Heart Academy Valkyries

Date: 03/27/2004 Time: Noon CST Site: Diddle Arena-Bowling Green KY Attendance: 2960

Visitors: Sacred Heart Academy Valkyries

| ## | Name | P | FG | 3 Pt | FT | PTS | ORB | DRB | TR | PF | AST | TO | BS | ST | MIN |
|--------------------|--------------------|---|--------------|------------|--------------|-----------|-----------|-----------|-----------|-----------|-----------|-----------|----------|----------|------------|
| 00 | * Carly Ormerod | | 4/9 | 1/5 | 3/5 | 14 | 3 | 1 | 4 | 0 | 10 | 2 | 0 | 2 | 32:00 |
| 3 | Alison Denbow | | 1/1 | 1/1 | 0/0 | 5 | 1 | 1 | 2 | 0 | 0 | 2 | 0 | 0 | 10:48 |
| 10 | Mary Daly Muller | | 0/0 | 0/0 | 0/0 | 0 | 0 | 0 | 0 | 0 | 0 | 0 | 0 | 0 | DNP |
| 11 | * Jackie Distler | | 4/7 | 0/2 | 2/2 | 10 | 0 | 3 | 3 | 2 | 2 | 4 | 0 | 1 | 27:42 |
| 15 | * Taylor Kopple | | 10/18 | 0/0 | 3/4 | 23 | 3 | 6 | 9 | 2 | 0 | 5 | 1 | 1 | 30:22 |
| 20 | Connie Ferch | | 0/0 | 0/0 | 0/0 | 0 | 0 | 0 | 0 | 0 | 0 | 0 | 0 | 0 | DNP |
| 22 | * Jordan Hess | | 3/5 | 0/0 | 1/2 | 7 | 3 | 0 | 3 | 2 | 1 | 7 | 0 | 2 | 26:30 |
| 23 | Sarah Miles | | 0/0 | 0/0 | 0/0 | 0 | 0 | 0 | 0 | 0 | 0 | 0 | 0 | 0 | DNP |
| 24 | Kelsey McCarty | | 0/0 | 0/0 | 0/0 | 0 | 0 | 0 | 0 | 1 | 0 | 0 | 0 | 0 | 0:36 |
| 30 | Elizabeth Campbell | | 0/0 | 0/0 | 0/0 | 0 | 0 | 1 | 1 | 0 | 0 | 0 | 0 | 0 | 1:56 |
| 33 | Meredith Wade | | 0/0 | 0/0 | 0/0 | 0 | 0 | 0 | 0 | 0 | 0 | 0 | 0 | 0 | DNP |
| 42 | * Crystal Kelly | | 1/2 | 0/0 | 5/6 | 7 | 4 | 7 | 11 | 4 | 2 | 0 | 6 | 0 | 30:06 |
| 43 | Kristen Barrow | | 0/0 | 0/0 | 0/0 | 0 | 0 | 0 | 0 | 0 | 0 | 0 | 0 | 0 | DNP |
| Team | | | | | | | 2 | 4 | 6 | | | | | | |
| Totals | | | 23/42 | 2/8 | 14/19 | 66 | 16 | 23 | 39 | 11 | 15 | 20 | 7 | 6 | 160 |
| 2 PT FG | | | 1st Half | 10/22 | 45.5% | 2nd Half | 13/20 | 65.0% | Game | 23/42 | 54.8% | | | | |
| 3 PT FG | | | 1st Half | 2/5 | 40.0% | 2nd Half | 0/3 | 0.00% | Game | 2/8 | 25.0% | | | | |
| Free Throws | | | 1st Half | 5/6 | 83.3% | 2nd Half | 9/13 | 69.2% | Game | 14/19 | 73.7% | | | | |

Home: Christian County Lady Colonels

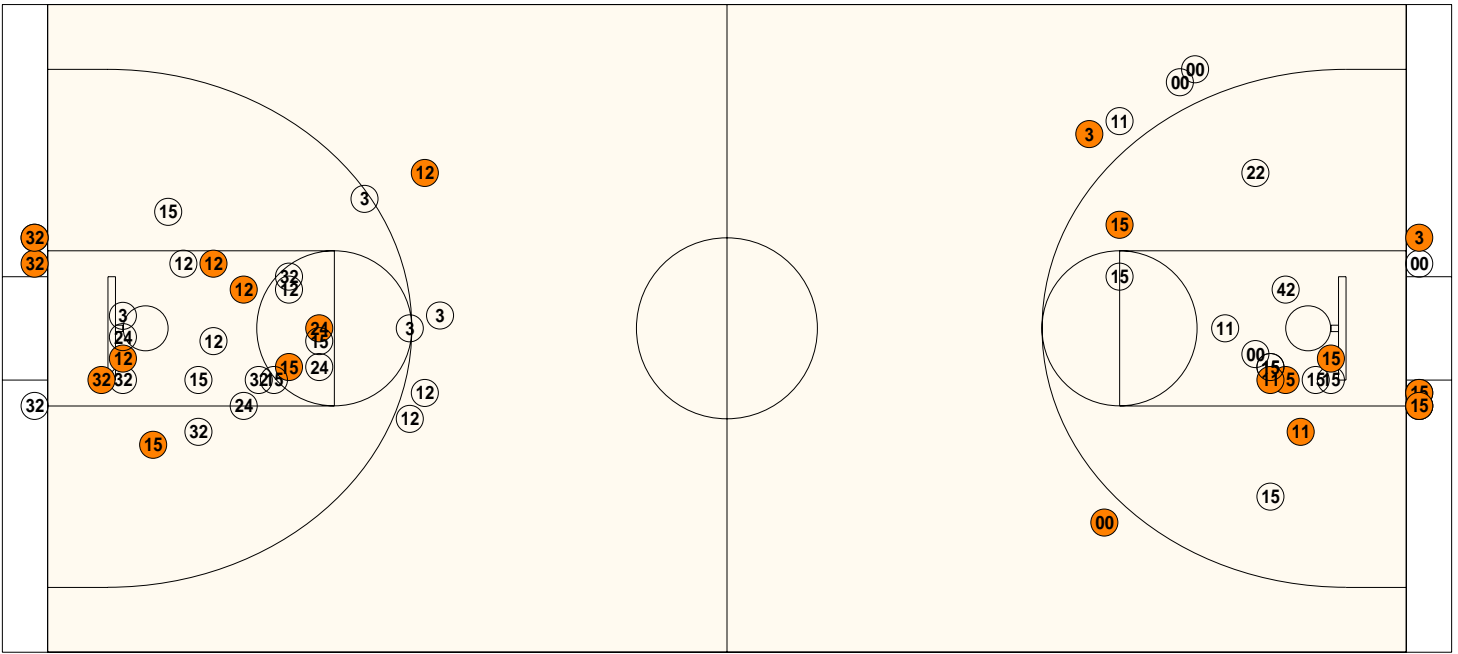
| ## | Name | P | FG | 3 Pt | FT | PTS | ORB | DRB | TR | PF | AST | TO | BS | ST | MIN |
|--------------------|------------------|---|--------------|-------------|-------------|-----------|-----------|-----------|-----------|-----------|-----------|-----------|----------|----------|------------|
| 3 | * Lydia Watkins | | 2/9 | 1/3 | 1/4 | 8 | 7 | 0 | 7 | 1 | 1 | 3 | 0 | 2 | 29:33 |
| 10 | Shanna McCombs | | 0/0 | 0/0 | 0/0 | 0 | 0 | 0 | 0 | 0 | 0 | 3 | 0 | 0 | 5:56 |
| 12 | * Corkey Stiger | | 5/15 | 2/10 | 1/2 | 17 | 6 | 3 | 9 | 4 | 2 | 2 | 1 | 0 | 32:00 |
| 15 | * Shaleea Petty | | 4/9 | 0/1 | 2/2 | 10 | 0 | 3 | 3 | 3 | 3 | 1 | 0 | 2 | 32:00 |
| 20 | Kelly Wangrycht | | 0/0 | 0/0 | 0/0 | 0 | 0 | 0 | 0 | 0 | 0 | 0 | 0 | 0 | DNP |
| 24 | * Rita Sanchez | | 1/6 | 0/0 | 2/2 | 4 | 3 | 1 | 4 | 5 | 2 | 2 | 1 | 1 | 22:39 |
| 25 | Annissa Wilson | | 0/0 | 0/0 | 0/0 | 0 | 0 | 0 | 0 | 0 | 0 | 0 | 0 | 0 | DNP |
| 30 | Tracey Howard | | 0/0 | 0/0 | 0/0 | 0 | 0 | 0 | 0 | 0 | 0 | 0 | 0 | 0 | DNP |
| 32 | * Arnika Brown | | 5/11 | 2/4 | 1/1 | 17 | 5 | 4 | 9 | 3 | 2 | 3 | 2 | 4 | 32:00 |
| 34 | Ashley Briggs | | 0/0 | 0/0 | 0/0 | 0 | 0 | 0 | 0 | 0 | 0 | 0 | 0 | 0 | DNP |
| 45 | Shermania Riley | | 0/0 | 0/0 | 0/0 | 0 | 0 | 0 | 0 | 0 | 0 | 0 | 0 | 0 | DNP |
| 50 | Renea Maxie | | 0/0 | 0/0 | 0/0 | 0 | 0 | 0 | 0 | 0 | 0 | 0 | 0 | 0 | DNP |
| 55 | Jana Betts | | 1/3 | 0/0 | 0/0 | 2 | 2 | 0 | 2 | 2 | 0 | 0 | 0 | 0 | 5:52 |
| 5 | Ashley Thompkins | | 0/0 | 0/0 | 0/0 | 0 | 0 | 0 | 0 | 0 | 0 | 0 | 0 | 0 | DNP |
| 21 | Shetera Lewis | | 0/0 | 0/0 | 0/0 | 0 | 0 | 0 | 0 | 0 | 0 | 0 | 0 | 0 | DNP |
| Team | | | | | | | 5 | 1 | 6 | | | | | | |
| Totals | | | 18/53 | 5/18 | 7/11 | 58 | 28 | 12 | 40 | 18 | 10 | 14 | 4 | 9 | 160 |
| 2 PT FG | | | 1st Half | 9/28 | 32.1% | 2nd Half | 9/25 | 36.0% | Game | 18/53 | 34.0% | | | | |
| 3 PT FG | | | 1st Half | 1/4 | 25.0% | 2nd Half | 4/14 | 28.6% | Game | 5/18 | 27.8% | | | | |
| Free Throws | | | 1st Half | 3/5 | 60.0% | 2nd Half | 4/6 | 66.7% | Game | 7/11 | 63.6% | | | | |

| | SACR | CHRI | | SACR | CHRI | | SACR | CHRI |
|-------------------|---|------|-------------------|------|------|-----------------|------|------|
| Free Throw Pts | 14 | 7 | 3Pt Points | 6 | 15 | Pts/Possession | 1.05 | 0.94 |
| Pts off Turnovers | 13 | 19 | 2nd Chance Points | 15 | 18 | Pts off Bench | 5 | 2 |
| Total Rebounds | 39 | 40 | Team Rebounds | 6 | 6 | Dead Ball Reb | 2 | 1 |
| Off Rebound % | 57.1 | 54.9 | Def Rebound % | 45.1 | 42.9 | Total Rebound % | 49.4 | 50.6 |
| 3Pt Efficiency | -11.5 | +5.1 | Def. Stops | 37 | 32 | Pts/Shot | 1.12 | 0.76 |
| Technical Fouls | SACR | CHRI | None | | | | | |
| Officials | CHRI | CHRI | None | | | | | |
| | Al Whitaker, Shannon Feck, Barry Barnes | | | | | | | |

| | Qtr 1 | Qtr 2 | Qtr 3 | Qtr 4 | OT 1 | OT 2 | OT 3 | OT 4 | Total |
|---------------------------------------|-------|-------|-------|-------|------|------|------|------|-----------|
| Sacred Heart Academy Valkyries | 17 | 14 | 16 | 19 | 0 | 0 | 0 | 0 | 66 |
| Christian County Lady Colonels | 9 | 15 | 19 | 15 | 0 | 0 | 0 | 0 | 58 |

Largest Lead CHRI 17 SACR 31 (14 pts) **Lead Changes** 0 **Number of Ties** 1
Comments: None

FIRST HALF



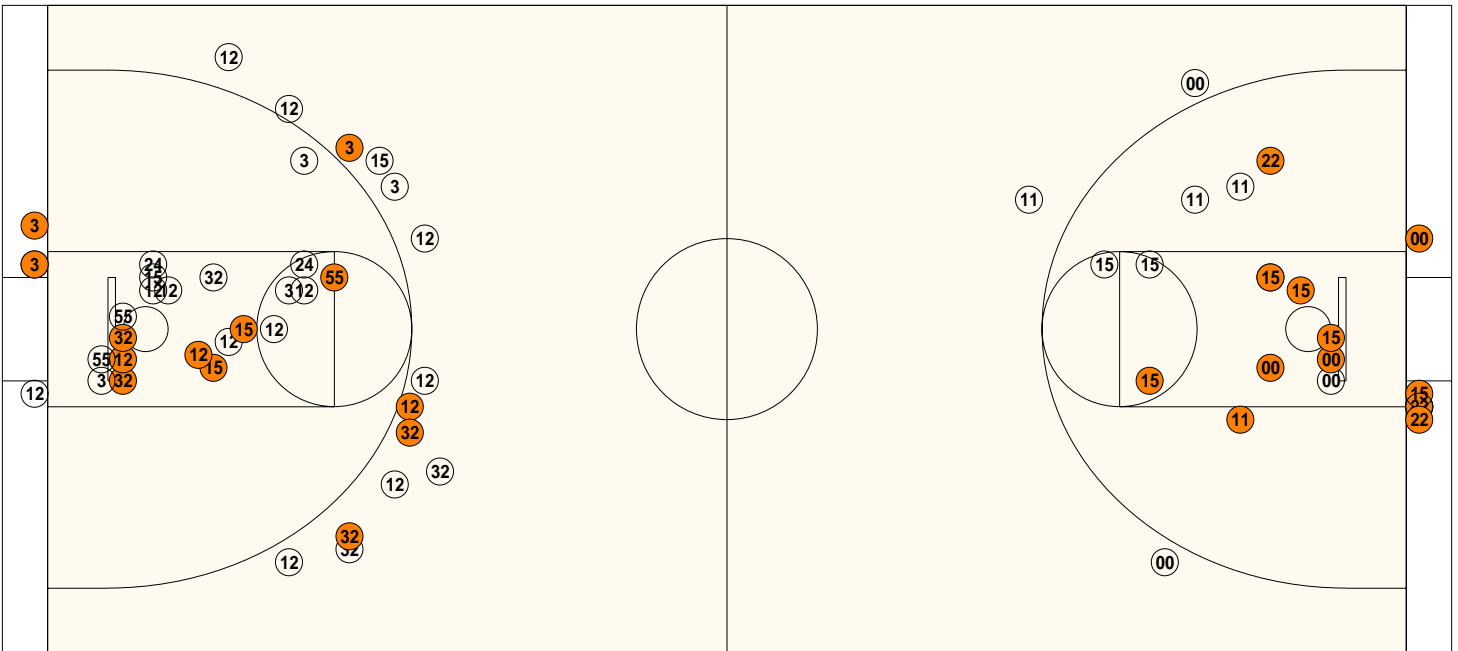
Christian County

| | | |
|--|------------|----------------|
| Shooting | Pts | Pts |
| 2FG 9/28 (32.1%) | 18 | Pts/Shot 0.71 |
| 3FG 1/4 (25.0%) | 3 | 2nd Eff Pts 8 |
| TFG 10/32 (31.3%) | | Pts off TO's 9 |
| FT 3/5 (60.0%) | 3 | 3Pt Eff +3.6 |
| Scoring Distribution: 2FG 75.0% 3FG 12.5% FT 12.5% | | |

Sacred Heart Academy

| | | |
|--|------------|-----------------|
| Shooting | Pts | Pts |
| 2FG 10/22 (45.5%) | 20 | Pts/Shot 1.03 |
| 3FG 2/5 (40.0%) | 6 | 2nd Eff Pts 7 |
| TFG 12/27 (44.4%) | | Pts off TO's 10 |
| FT 5/6 (83.3%) | 5 | 3Pt Eff +9.7 |
| Scoring Distribution: 2FG 64.5% 3FG 19.4% FT 16.1% | | |

SECOND HALF



Christian County

| | | |
|--|------------|------------------------|
| 2FG 9/25 (36.0%) | 18s | Pts/Shot 0.81 |
| 3FG 4/14 (28.6%) | 12 | 2nd Eff Pts 10 |
| TFG 13/39 (33.3%) | | Pts off TO's 10 |
| FT 4/6 (66.7%) | 4 | 3Pt Eff +4.6 |
| Scoring Distribution: 2FG 52.9% 3FG 35.3% FT 11.8% | | |

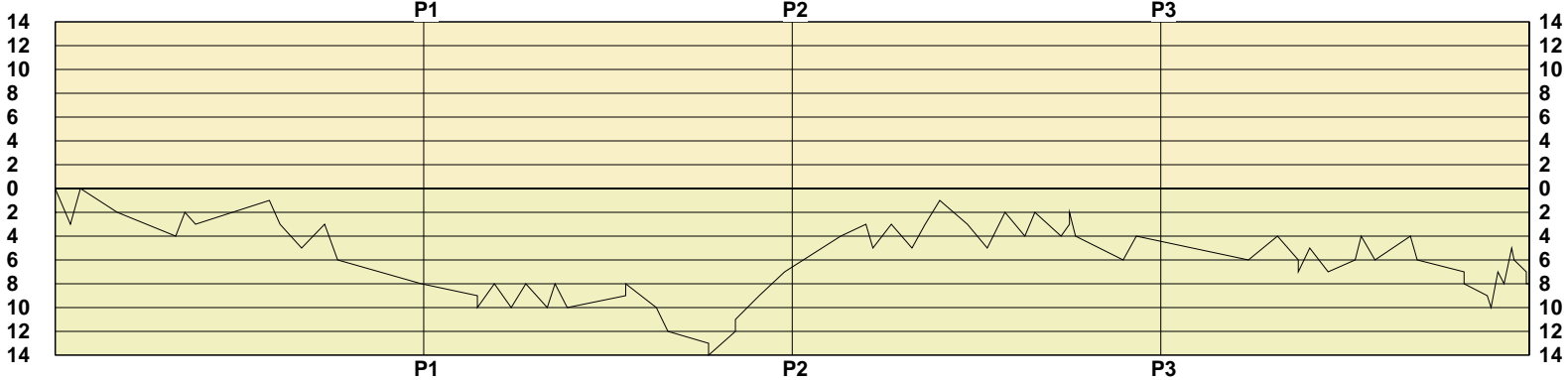
Sacred Heart Academy

| | | |
|---|------------|-----------------------|
| 2FG 13/20 (65.0%) | 26s | Pts/Shot 1.21 |
| 3FG 0/3 (0.00%) | 0 | 2nd Eff Pts 8 |
| TFG 13/23 (56.5%) | | Pts off TO's 3 |
| FT 9/13 (69.2%) | 9 | 3Pt Eff -43.3 |
| Scoring Distribution: 2FG 74.3% 3FG 0.0% FT 25.7% | | |

KHSAA Basketball - Scoring Timeline Report
Christian County Lady Colonels vs. Sacred Heart Academy Valkyries
DATE: 03/27/2004 TIME: Noon CST SITE: Diddle Arena-Bowling Green KY

Lady Colonels

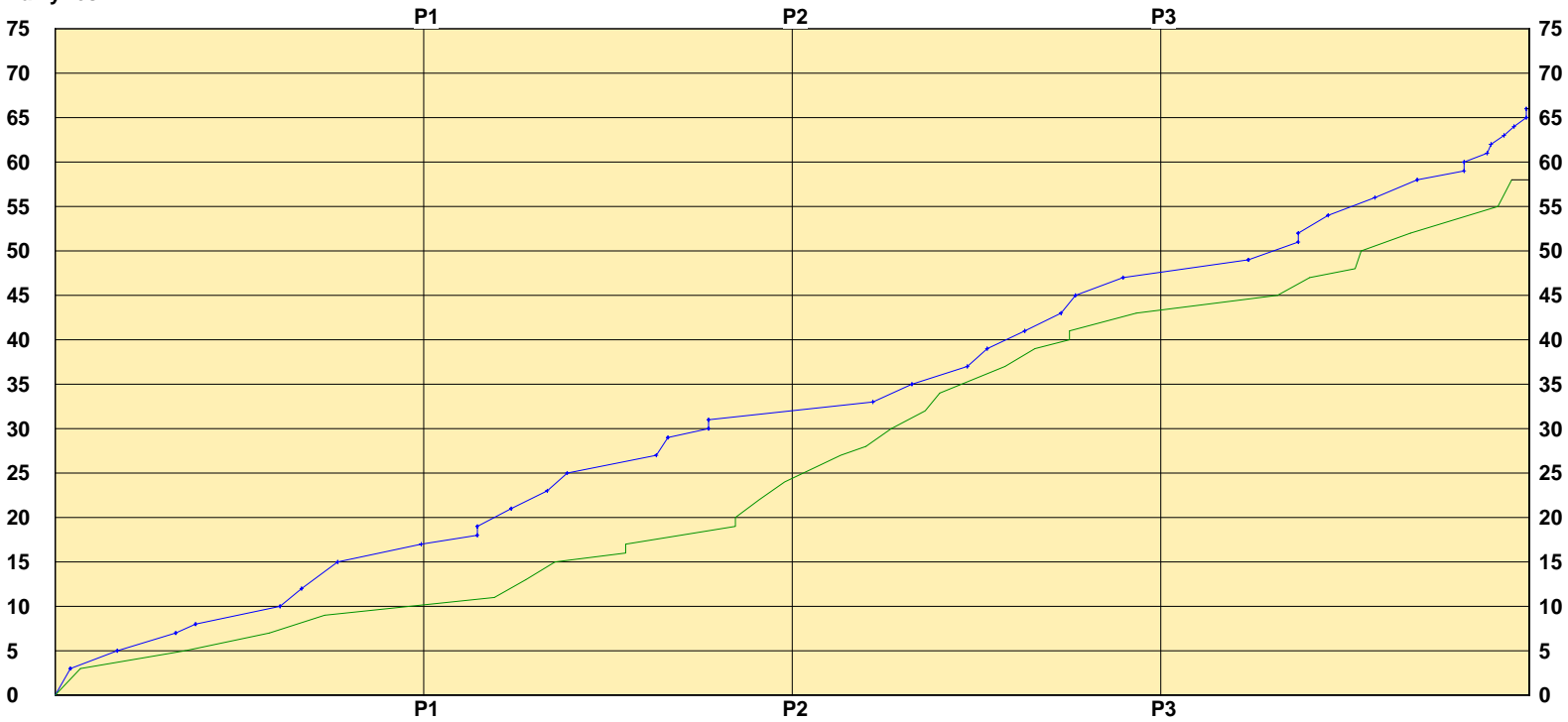
LEAD TIMELINE



Valkyries

Lady Colonels
Valkyries

SCORING TIMELINE



Largest Lead CHRI 17 SACR 31 (14 pts) Lead Changes 0 Number of Ties 1

KHSAA Basketball - Play by Play Report - Scoring Only (pg 1)
Christian County Lady Colonels vs. Sacred Heart Academy Valkyries
Date: 03/27/2004 Time: Noon CST Site: Diddle Arena-Bowling Green KY Attendance: 2960

| Name | Action | Action | Score | Clock | Diff | Name | Action | Action |
|-----------|--------------|-----------------|-------|--------|---------|-----------|------------|------------------|
| C Stiger | 3Pt Made | S Petty Assist | 0-3 | 1 7:40 | -3 (L1) | C Ormerod | 3Pt Made | C Kelly Assist |
| | | | 3-3 | 1 7:27 | (T1) | | | |
| | | | 3-5 | 1 6:39 | -2 | J Hess | Layup Made | |
| S Petty | FG Made | | 3-7 | 1 5:23 | -4 | J Distler | Layup Made | |
| | | | 5-7 | 1 5:11 | -2 | | | |
| C Stiger | Putback Made | | 5-8 | 1 4:57 | -3 | C Kelly | FT Made | |
| | | | 7-8 | 1 3:21 | -1 | | | |
| | | | 7-10 | 1 3:07 | -3 | T Kopple | FG Made | |
| R Sanchez | FG Made | C Stiger Assist | 7-12 | 1 2:39 | -5 | J Distler | FG Made | C Ormerod Assist |
| | | | 9-12 | 1 2:09 | -3 | | | |
| | | | 9-15 | 1 1:52 | -6 | A Denbow | 3Pt Made | J Distler Assist |
| | | | 9-17 | 1 0:03 | -8 | T Kopple | FG Made | C Ormerod Assist |

End of Period Summary Lady Colonels 9 Valkyries 17

Largest Lead: Lady Colonels 9 Valkyries 17 (8 pts)

Lead in Period: Lady Colonels 9 Valkyries 17 (8 pts)

9 for 6 oppo pts

4 for 2 pts

4/15 for 26.7 %

0/0 for 0.00 %

Turnovers

2nd Chances

Field Goals

Free Throws

Lead Changes: 1 Ties: 1

Lead Changes: 0 Ties: 1 (this period)

9 for 2 oppo pts

3 for 1 pts

7/13 for 53.8 %

1/2 for 50.0 %

| | | | | | | | | |
|-----------|---------------|------------------|-------|--------|-----|-----------|---------------|------------------|
| | | | 9-18 | 2 6:50 | -9 | C Kelly | FT Made | |
| | | | 9-19 | 2 6:50 | -10 | C Kelly | FT Made | |
| S Petty | FG Made | | 11-19 | 2 6:28 | -8 | | | |
| | | | 11-21 | 2 6:06 | -10 | T Kopple | Layup Made | C Ormerod Assist |
| C Stiger | FG Made | | 13-21 | 2 5:47 | -8 | | | |
| | | | 13-23 | 2 5:19 | -10 | T Kopple | Layup Made | C Ormerod Assist |
| C Stiger | FG Made | | 15-23 | 2 5:09 | -8 | | | |
| | | | 15-25 | 2 4:53 | -10 | A Denbow | Layup Made | J Distler Assist |
| R Sanchez | FT Made | | 16-25 | 2 3:37 | -9 | | | |
| R Sanchez | FT Made | | 17-25 | 2 3:37 | -8 | | | |
| | | | 17-27 | 2 2:57 | -10 | T Kopple | Putback Made | |
| | | | 17-29 | 2 2:42 | -12 | J Distler | FG Made | C Ormerod Assist |
| R Sanchez | Personal Foul | | 17-30 | 2 1:49 | -13 | C Kelly | FT Made | |
| | | | 17-31 | 2 1:49 | -14 | C Kelly | FT Made | |
| A Brown | Layup Made | R Sanchez Assist | 19-31 | 2 1:14 | -12 | | | |
| A Brown | FT Made | | 20-31 | 2 1:14 | -11 | T Kopple | Personal Foul | |
| A Brown | Putback Made | | 22-31 | 2 0:43 | -9 | | | |
| A Brown | Layup Made | S Petty Assist | 24-31 | 2 0:10 | -7 | | | |

End of Period Summary Lady Colonels 24 Valkyries 31

Largest Lead: Lady Colonels 17 Valkyries 31 (14 pts)

Lead in Period: Lady Colonels 17 Valkyries 31 (14 pts)

3 for 4 oppo pts

7 for 6 pts

6/17 for 35.3 %

3/5 for 60.0 %

Turnovers

2nd Chances

Field Goals

Free Throws

Lead Changes: 1 Ties: 1

Lead Changes: 0 Ties: 0 (this period)

5 for 7 oppo pts

5 for 6 pts

5/14 for 35.7 %

4/4 for 100 %

| | | | | | | | | |
|-----------|----------|------------------|-------|--------|----|-----------|---------------|--|
| L Watkins | 3Pt Made | R Sanchez Assist | 27-31 | 3 6:57 | -4 | | | |
| C Stiger | FT Made | | 28-31 | 3 6:24 | -3 | J Hess | Personal Foul | |
| | | | 28-33 | 3 6:15 | -5 | C Ormerod | Layup Made | |

KHSAA Basketball - Play by Play Report - Scoring Only (pg 2)
Christian County Lady Colonels vs. Sacred Heart Academy Valkyries
Date: 03/27/2004 Time: Noon CST Site: Diddle Arena-Bowling Green KY Attendance: 2960

| Name | Action | Action | Score | Clock | Diff | Name | Action | Action |
|-----------|--------------|------------------|-------|--------|------|-----------|---------------|------------------|
| A Brown | Putback Made | | 30-33 | 3 5:51 | -3 | | | |
| | | | 30-35 | 3 5:24 | -5 | C Kelly | Layup Made | C Ormerod Assist |
| C Stiger | Putback Made | | 32-35 | 3 5:07 | -3 | | | |
| L Watkins | Layup Made | A Brown Assist | 34-35 | 3 4:48 | -1 | | | |
| | | | 34-37 | 3 4:12 | -3 | J Hess | FG Made | C Ormerod Assist |
| | | | 34-39 | 3 3:46 | -5 | T Kopple | Layup Made | C Ormerod Assist |
| C Stiger | 3Pt Made | A Brown Assist | 37-39 | 3 3:23 | -2 | | | |
| | | | 37-41 | 3 2:57 | -4 | C Ormerod | Putback Made | |
| A Brown | Putback Made | | 39-41 | 3 2:44 | -2 | | | |
| | | | 39-43 | 3 2:10 | -4 | T Kopple | FG Made | C Ormerod Assist |
| S Petty | FT Made | | 40-43 | 3 1:59 | -3 | C Kelly | Personal Foul | |
| S Petty | FT Made | | 41-43 | 3 1:59 | -2 | | | |
| | | | 41-45 | 3 1:51 | -4 | T Kopple | FG Made | J Hess Assist |
| | | | 41-47 | 3 0:49 | -6 | T Kopple | Putback Made | |
| J Betts | FG Made | L Watkins Assist | 43-47 | 3 0:32 | -4 | | | |

End of Period Summary Lady Colonels 43 Valkyries 47

| | |
|--|--|
| Largest Lead: Lady Colonels 17 Valkyries 31 (14 pts) | Lead Changes: 1 Ties: 1 |
| Lead in Period: Lady Colonels 24 Valkyries 31 (7 pts) | Lead Changes: 0 Ties: 0 (this period) |
| 1 for 2 oppo pts | 3 for 6 oppo pts |
| 9 for 7 pts | 7 for 8 pts |
| 7/19 for 36.8 % | 8/16 for 50.0 % |
| 3/4 for 75.0 % | 0/0 for 0.00 % |

| Name | Action | Action | Score | Clock | Diff | Name | Action | Action |
|-----------|---------------|-----------------|-------|--------|------|-----------|---------------|------------------|
| S Petty | FG Made | | 43-49 | 4 6:06 | -6 | J Distler | FG Made | |
| | | | 45-49 | 4 5:28 | -4 | | | |
| | | | 45-51 | 4 5:01 | -6 | C Ormerod | FG Made | |
| C Stiger | Personal Foul | | 45-52 | 4 5:01 | -7 | C Ormerod | FT Made | |
| L Watkins | Layup Made | S Petty Assist | 47-52 | 4 4:46 | -5 | | | |
| | | | 47-54 | 4 4:22 | -7 | T Kopple | FG Made | C Kelly Assist |
| L Watkins | FT Made | | 48-54 | 4 3:47 | -6 | C Kelly | Personal Foul | |
| S Petty | FG Made | | 50-54 | 4 3:39 | -4 | | | |
| | | | 50-56 | 4 3:21 | -6 | C Ormerod | Layup Made | |
| C Stiger | FG Made | | 52-56 | 4 2:35 | -4 | | | |
| | | | 52-58 | 4 2:26 | -6 | J Hess | Layup Made | C Ormerod Assist |
| | | | 52-59 | 4 1:25 | -7 | T Kopple | FT Made | |
| | | | 52-60 | 4 1:25 | -8 | T Kopple | FT Made | |
| S Petty | Personal Foul | | 52-61 | 4 0:55 | -9 | T Kopple | FT Made | |
| S Petty | Personal Foul | | 52-62 | 4 0:50 | -10 | C Ormerod | FT Made | |
| A Brown | 3Pt Made | C Stiger Assist | 55-62 | 4 0:41 | -7 | | | |
| | | | 55-63 | 4 0:33 | -8 | C Ormerod | FT Made | |
| A Brown | 3Pt Made | | 58-63 | 4 0:23 | -5 | | | |
| J Betts | Personal Foul | | 58-64 | 4 0:20 | -6 | J Hess | FT Made | |
| | | | 58-65 | 4 0:04 | -7 | J Distler | FT Made | |
| | | | 58-66 | 4 0:04 | -8 | J Distler | FT Made | |

End of Period Summary Lady Colonels 58 Valkyries 66

| | |
|---|--|
| Largest Lead: Lady Colonels 17 Valkyries 31 (14 pts) | Lead Changes: 1 Ties: 1 |
| Lead in Period: Lady Colonels 52 Valkyries 62 (10 pts) | Lead Changes: 0 Ties: 0 (this period) |
| 1 for 1 oppo pts | 3 for 4 oppo pts |
| 8 for 3 pts | 1 for 0 pts |
| 6/20 for 30.0 % | 5/7 for 71.4 % |

OFFICIAL BASKETBALL BOX SCORE

Sacred Heart Academy Valkyries vs Christian County Lady Colonels

03/27/2004 Noon CST

Final Box Score

Diddle Arena

Bowling Green KY

| No. | Sacred Heart Academy Valkyries | Total FG | | 3-point | | Free throw | | Rebounds | | | F | TP | A | TO | BLK | STL | MIN | |
|----------------------------------|--------------------------------|-----------|-----------|----------|----------|------------|-----------|-----------|-----------|-----------|-----------|-----------|-----------|-----------|----------|----------|------------|--|
| | | FG | FGA | FG | FGA | FT | FTA | Off | Def | Tot | | | | | | | | |
| 00 | Carly Ormerod | 5 | 14 | 1 | 5 | 3 | 5 | 3 | 1 | 4 | 0 | 14 | 10 | 2 | 0 | 2 | 32:00 | |
| 3 | Alison Denbow | 2 | 2 | 1 | 1 | 0 | 0 | 1 | 1 | 2 | 0 | 5 | 0 | 2 | 0 | 0 | 10:48 | |
| 10 | Mary Daly Muller | 0 | 0 | 0 | 0 | 0 | 0 | 0 | 0 | 0 | 0 | 0 | 0 | 0 | 0 | 0 | DNP | |
| 11 | Jackie Distler | 4 | 9 | 0 | 2 | 2 | 2 | 0 | 3 | 3 | 2 | 10 | 2 | 4 | 0 | 1 | 27:42 | |
| 15 | Taylor Kopple | 10 | 18 | 0 | 0 | 3 | 4 | 3 | 6 | 9 | 2 | 23 | 0 | 5 | 1 | 1 | 30:22 | |
| 42 | Crystal Kelly | 1 | 2 | 0 | 0 | 5 | 6 | 4 | 7 | 11 | 4 | 7 | 2 | 0 | 6 | 0 | 30:06 | |
| 22 | Jordan Hess | 3 | 5 | 0 | 0 | 1 | 2 | 3 | 0 | 3 | 2 | 7 | 1 | 7 | 0 | 2 | 26:30 | |
| 30 | Elizabeth Campbell | 0 | 0 | 0 | 0 | 0 | 0 | 0 | 1 | 1 | 0 | 0 | 0 | 0 | 0 | 0 | 1:56 | |
| 24 | Kelsey McCarty | 0 | 0 | 0 | 0 | 0 | 0 | 0 | 0 | 0 | 1 | 0 | 0 | 0 | 0 | 0 | 0:36 | |
| 20 | Connie Ferch | 0 | 0 | 0 | 0 | 0 | 0 | 0 | 0 | 0 | 0 | 0 | 0 | 0 | 0 | 0 | DNP | |
| 23 | Sarah Miles | 0 | 0 | 0 | 0 | 0 | 0 | 0 | 0 | 0 | 0 | 0 | 0 | 0 | 0 | 0 | DNP | |
| 33 | Meredith Wade | 0 | 0 | 0 | 0 | 0 | 0 | 0 | 0 | 0 | 0 | 0 | 0 | 0 | 0 | 0 | DNP | |
| 43 | Kristen Barrow | 0 | 0 | 0 | 0 | 0 | 0 | 0 | 0 | 0 | 0 | 0 | 0 | 0 | 0 | 0 | DNP | |
| Team (Included in Totals) | | | | | | | | | | | | | | | | | | |
| Totals | | 25 | 50 | 2 | 8 | 14 | 19 | 16 | 23 | 39 | 11 | 66 | 15 | 20 | 7 | 6 | 160 | |

Total FG%: 1st half 12 - 27 (44.4%) 2nd half 13 - 23 (56.5%) Game 25 - 50 (50.0%) Deadball rebounds 2
 3Pt FG%: 1st half 2 - 5 (40.0%) 2nd half 0 - 3 (0.00%) Game 2 - 8 (25.0%)
 FT%: 1st half 5 - 6 (83.3%) 2nd half 9 - 13 (69.2%) Game 14 - 19 (73.7%)

| No. | Christian County Lady Colonels | Total FG | | 3-point | | Free throw | | Rebounds | | | F | TP | A | TO | BLK | STL | MIN | |
|----------------------------------|--------------------------------|-----------|-----------|----------|-----------|------------|-----------|-----------|-----------|-----------|-----------|-----------|-----------|-----------|----------|----------|------------|--|
| | | FG | FGA | FG | FGA | FT | FTA | Off | Def | Tot | | | | | | | | |
| 3 | Lydia Watkins | 3 | 12 | 1 | 3 | 1 | 4 | 7 | 0 | 7 | 1 | 8 | 1 | 3 | 0 | 2 | 29:33 | |
| 10 | Shanna McCombs | 0 | 0 | 0 | 0 | 0 | 0 | 0 | 0 | 0 | 0 | 0 | 0 | 3 | 0 | 0 | 5:56 | |
| 12 | Corkey Stiger | 7 | 25 | 2 | 10 | 1 | 2 | 6 | 3 | 9 | 4 | 17 | 2 | 2 | 1 | 0 | 32:00 | |
| 15 | Shaleea Petty | 4 | 10 | 0 | 1 | 2 | 2 | 0 | 3 | 3 | 3 | 10 | 3 | 1 | 0 | 2 | 32:00 | |
| 20 | Kelly Wangrycht | 0 | 0 | 0 | 0 | 0 | 0 | 0 | 0 | 0 | 0 | 0 | 0 | 0 | 0 | 0 | DNP | |
| 32 | Arnika Brown | 7 | 15 | 2 | 4 | 1 | 1 | 5 | 4 | 9 | 3 | 17 | 2 | 3 | 2 | 4 | 32:00 | |
| 24 | Rita Sanchez | 1 | 6 | 0 | 0 | 2 | 2 | 3 | 1 | 4 | 5 | 4 | 2 | 2 | 1 | 1 | 22:39 | |
| 55 | Jana Betts | 1 | 3 | 0 | 0 | 0 | 0 | 2 | 0 | 2 | 2 | 2 | 0 | 0 | 0 | 0 | 5:52 | |
| 25 | Annissa Wilson | 0 | 0 | 0 | 0 | 0 | 0 | 0 | 0 | 0 | 0 | 0 | 0 | 0 | 0 | 0 | DNP | |
| 30 | Tracey Howard | 0 | 0 | 0 | 0 | 0 | 0 | 0 | 0 | 0 | 0 | 0 | 0 | 0 | 0 | 0 | DNP | |
| 34 | Ashley Briggs | 0 | 0 | 0 | 0 | 0 | 0 | 0 | 0 | 0 | 0 | 0 | 0 | 0 | 0 | 0 | DNP | |
| 45 | Shermania Riley | 0 | 0 | 0 | 0 | 0 | 0 | 0 | 0 | 0 | 0 | 0 | 0 | 0 | 0 | 0 | DNP | |
| 50 | Renea Maxie | 0 | 0 | 0 | 0 | 0 | 0 | 0 | 0 | 0 | 0 | 0 | 0 | 0 | 0 | 0 | DNP | |
| 5 | Ashley Thompkins | 0 | 0 | 0 | 0 | 0 | 0 | 0 | 0 | 0 | 0 | 0 | 0 | 0 | 0 | 0 | DNP | |
| 21 | Shetera Lewis | 0 | 0 | 0 | 0 | 0 | 0 | 0 | 0 | 0 | 0 | 0 | 0 | 0 | 0 | 0 | DNP | |
| Team (Included in Totals) | | | | | | | | | | | | | | | | | | |
| Totals | | 23 | 71 | 5 | 18 | 7 | 11 | 28 | 12 | 40 | 18 | 58 | 10 | 14 | 4 | 9 | 160 | |

Total FG%: 1st half 10 - 32 (31.3%) 2nd half 13 - 39 (33.3%) Game 23 - 71 (32.4%) Deadball rebounds 1
 3Pt FG%: 1st half 1 - 4 (25.0%) 2nd half 4 - 14 (28.6%) Game 5 - 18 (27.8%)
 FT%: 1st half 3 - 5 (60.0%) 2nd half 4 - 6 (66.7%) Game 7 - 11 (63.6%)

Technical Fouls: None

Attendance: 2960

Officials: Al Whitaker, Shannon Feck, Barry Barnes

| Score by Period | | | | | 1st | 2nd | 3rd | 4th | Final | Record | Overall | Conf |
|--------------------------------|--|--|--|--|-----|-----|-----|-----|-------|---------------|---------|------|
| Sacred Heart Academy Valkyries | | | | | 17 | 14 | 16 | 19 | 66 | Valkyries | | |
| Christian County Lady Colonels | | | | | 9 | 15 | 19 | 15 | 58 | Lady Colonels | | |

| | | | | | |
|--------------------------------|----------------|--------------------------------|-----------|--------------------------------|-------|
| Lady Colonels Valkyries | | Lady Colonels Valkyries | | Lady Colonels Valkyries | |
| Points off Turnovers | 19 13 | Second Effort Points | 18 15 | Bench Points | 2 5 |
| Points in the Paint | 28 30 | 3 Point Points | 15 6 | Free Throw Points | 7 14 |
| 3pt Efficiency | +5.1 -11.5 | Points/Shot | 0.76 1.12 | Defensive Stops | 32 37 |
| Largest Lead | 17 31 (14 pts) | Lead Changes | 0 | Number of Ties | 1 |

Game comments: None